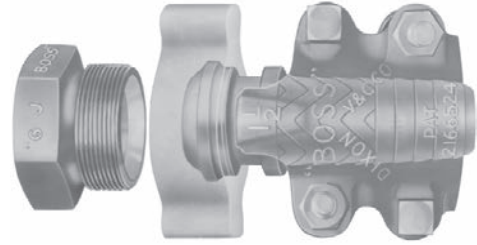


## GJ Boss™ Ground Joint Seal

## Features:

- positive metal-to-polymer seal
- leakproof seal forms when the metal head of the stem makes contact with the patented polymer seat in the spud
- non-metallic polymer seat resists most chemicals found in manufacturing facilities (reference corrosion resistance chart on pages 818-823)
- recommended for steam service up to **450°F**
- easy to seal
- *plated steel and / or iron*
- use with Boss™ clamps found on pages 116 and 117.



complete female

stem

wing nut

knurled nut

Hose Shank x NPT	Part #	Price/E	Part #	Price/E	Opt Qty	Part #	Price/E	Opt Qty	Part #	Price/E	Opt Qty
1/4"	<b>GF1</b> <sup>1</sup>	\$49.85	<b>GBA</b>	\$18.75	100	<b>SLS4</b>	\$12.10	100	---	---	--
3/8"	<b>GF3</b> <sup>1</sup>	42.65	<b>GCA</b>	8.90	100	<b>CB</b>	11.80	100	---	---	--
1/2"	<b>GF6</b>	33.50	<b>GB1</b>	7.40	100	<b>B2</b>	7.85	100	---	---	--
1/2" x 3/4"	<b>GF26-1</b>	43.40	<b>GB6-1</b>	17.20	50	<b>B12</b>	10.30	25	---	---	--
3/4"	<b>GF26</b>	40.70	<b>GB6</b>	14.50	50	<b>B12</b>	10.30	25	<b>KB12</b>	\$15.45	25
1"	<b>GF36</b>	41.70	<b>GB11</b>	15.20	50	<b>B12</b>	10.30	25	<b>KB12</b>	15.45	25
1 1/4"	<b>GF51</b>	78.80	<b>GB16</b>	23.60	25	<b>B17</b>	19.00	25	---	---	--
1 1/2"	<b>GF61</b>	75.50	<b>GB21</b>	22.25	25	<b>B17</b>	19.00	25	---	---	--
2"	<b>GF81</b> <sup>2</sup>	91.35	<b>GB26</b> <sup>2,4</sup>	25.00	10	<b>B27</b>	30.35	10	---	---	--
2 1/2"	<b>GF96</b>	215.50	<b>GB31</b>	56.85	5	<b>B32</b>	68.80	5	---	---	--
3"	<b>GF111</b>	246.40	<b>GB36</b> <sup>3</sup>	90.00	5	<b>B37</b>	59.30	5	---	---	--
4"	<b>GF141</b>	500.00	<b>GB46</b>	160.60	5	<b>B47</b>	168.00	5	---	---	--
6"	<b>GF201</b> <sup>1</sup>	1183.25	<b>GB66</b>	365.00	2	<b>B67</b>	248.25	2	---	---	--

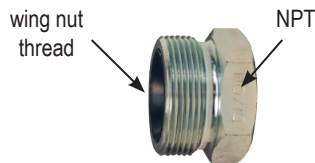


<sup>1</sup> 1/4", 3/8" and 6" available only with copper seat spuds

<sup>2</sup> not to be used with #250, #275 or #306 Boss™ clamps

<sup>3</sup> GB36 has a machined shank to accept a Boss™ clamp, King Crimp™ sleeve or a ferrule

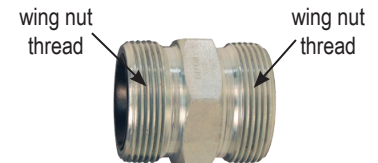
<sup>4</sup> GB26 will be replaced with GB26CR, this replacement part will have a machined hose shank to accommodate a Boss™ clamp, King Crimp™ sleeve or ferrule



female spud



male spud



double spud

Thread	Part #	Price/E	Opt Qty	Part #	Price/E	Part #	Price/E
1/4"	<b>GBC</b> <sup>1</sup>	\$19.00	100	---	---	---	---
3/8"	<b>GCC</b> <sup>1</sup>	21.95	100	<b>GMC</b> <sup>1</sup>	\$20.00	---	---
1/2"	<b>GB3</b>	18.25	100	<b>GM3</b>	22.90	<b>GDB3</b>	\$36.00
3/4"	<b>GB8</b>	15.90	50	<b>GM8</b>	21.70	<b>GDB13</b>	35.40
1"	<b>GB13</b>	16.50	50	<b>GM13</b>	22.90	<b>GDB13</b>	35.40
1 1/4"	<b>GB18</b>	36.20	25	<b>GM18</b>	51.85	<b>GDB23</b>	61.50
1 1/2"	<b>GB23</b>	34.25	25	<b>GM23</b>	50.00	<b>GDB23</b>	61.50
2"	<b>GB28</b>	36.00	10	<b>GM28</b>	54.00	<b>GDB28</b>	66.25
2 1/2"	<b>GB33</b>	89.85	5	<b>GM33</b>	128.10	<b>GDB33</b>	131.35
3"	<b>GB38</b>	97.10	5	<b>GM38</b>	134.70	<b>GDB38</b>	137.70
4"	<b>GB48</b>	171.40	5	---	---	---	---
6"	<b>GB68</b> <sup>1</sup>	570.00	2	---	---	---	---

<sup>1</sup> 1/4", 3/8" and 6" available only with copper seat spuds



A list of products recommended for steam service can be found on page 108.