












Personal Protective Equipment





Lens Selection Chart


LENS COLOR	APPLICATIONS	VLT*	UV Absorption
Clear 	For indoor applications where impact, dust and debris protection is required. Also for outdoor use in low light situations.	92%	99.9%
Gray 	For outdoor applications where sunlight and glare cause eye strain and fatigue. A neutral shade that provides true color recognition while reducing visible brightness. All purpose eyewear. Not recommended for indoor use.	15%	99.9%
Espresso 	Commonly used in outdoor applications where sunlight and glare cause eye strain and fatigue. Improves depth perception and contrast in variable light condition. Not recommended for indoor use.	15%	99.9%
Amber 	For low light applications (indoors, at dawn/dusk, foggy days). Reduces blue light and ultraviolet light, increases contrast, brightens and enhances details improving visual acuity. Ideal for quality control inspections.	90%	99.9%
Indoor/Outdoor 	For use when moving to or from indoor and outdoor environments. Allows user to wear one pair of glasses in both situations.	50%	99.9%
Lite Silver 	Commonly used to ease the transition between indoor and outdoor environments by reducing glare.	50%	99.9%
Silver or Blue Mirror 	For outdoor applications. Mirrored lens reflects light, reducing the amount of light that passes through the lens. Significantly reduces glare and bright light. Not recommended for indoor use.	10%	99.9%
Lite Blue 	Most commonly used for indoor applications where there are high levels of yellow incandescent/fluorescent lamps, or high and low pressure sodium vapor lighting, offering good contrast.	50%	99.9%
Vermilion 	Ideal for indoor inspection under bright lighting. Enhances contrast while reducing all color equally for optimum color recognition. Also reduces glare from fluorescent and halogen lighting.	55%	99.9%
IR 3.0 / IR 5.0 	Shade 3.0 & 5.0 welding lens. For use around the welding site or for brazing and cutting.	2%	99.9%
Retina 	Conventionally used for use with dental bonding blue light lasers.	20%	99.9%

*Visual Light Transmittance (VLT) is the measure of the amount of light that passes through the glass. 35% VLT means 35% of the visible light passes through the glass and the rest of the light is blocked.


Lens Coatings/Options


 **ENCOTE®**
An all-in-one anti-fog, anti-scratch and anti-static coating for hostile environments.

 **ScratchCoat®**
A scratch-resistant coating to prolong the life of the lens.

 **ENFOG®**
An anti-fog coating to prevent the formation of fog on the lens.

 **FogStopper™**
An anti-fog coating to prevent the formation of fog on the lens used on Guard-Dogs® products.

 **Custom Imprint**
Your logo can be imprinted on safety eyewear & accessories. Multi-color imprints may be available. Please consult with an Encon representative for more information.

 **On-Line Video**
Go to www.enconsafety.com/resources to see a collection of online instructional videos about this product.

Industry Specifications

Conformity to ANSI Z87.1-2010 has been assessed per ANSI/ISEA 125-2014 Level 3.



Encon® is proud to use COLTS third party testing facility to ensure compliance with our products. We test our products to meet the following applicable standards:

- ANSI Z87.1+ Certified by COLTS to meet or exceed all High Impact Standards for North & South America
- CSA Z94.3-2007 Certified through COLTS by Authority from the Standards Council of Canada
- CE EN166 Specification (Eyewear) CE EN352.2-2002 (Hearing Protection) for use in European Countries
- Ballistic standard of U.S. Military, MCEPS GL-PD 10-12.

Encon®, Veratti®, ENFOG®, ENCOTE®, QD2®, QD3®, Fog Fixer® are registered trademarks of Encon Safety Products, Inc. Guard-Dogs, Aggressive Eyewear® is a registered trademark of ABBS Vision Systems, Ventura, California, and is licensed by Encon Safety Products, Inc. NASCAR® is a registered trademark of the National Association for Stock Car Auto Racing, Inc.

PERSONAL PROTECTIVE EQUIPMENT

SAFETY EYEWEAR

NASCAR® 460™	4
NASCAR® 427™	4
NASCAR® 442™	4
NASCAR® GT™	5
Veratti® 514™	5
Veratti® 3UR™	5
Veratti® LC7™	6
Veratti® 283™	6
Veratti® 383™	6
Veratti® 410™	7
Veratti® 528™	7
Veratti® 351™	7
Veratti® 267™	8
Veratti® 400™	8
Veratti® V8™	8
Veratti® 307™	9
Veratti® V6™	9
Veratti® LS7™	9
Veratti® 429™	10
Veratti® Sport™	10
Veratti® GT™	10
Veratti® 1000™	11
Veratti® 2000™	11
Veratti® Breeze®	11
Veratti® 1100™	12
Veratti® OTG™	12
Veratti® MINI OTG™	12
Veratti® Tuff-Spec®	13
Veratti® GT™ Readers	13
Veratti® 2000™ Readers	13
Guard-Dog® Original Bones™	14
Guard-Dog® Vented Purebreds™	14
Guard-Dog® Bones Xtreme™	14
Guard-Dog® OFR™ Purebreds™	15
Guard-Dog® Purebreds™ Xtreme™	15

Guard-Dog® XJ2™	15
Guard-Dog® XJ4™	16
Guard-Dog® Dust Buster™ I	16
Guard-Dog® Dust Buster™ II	16
Guard-Dog® Dust Buster™ III	17
Guard-Dog® Reader Inserts	17
Veratti® Tuff-Spec® Bonding	17
Veratti® 2000™ Bonding	18

SAFETY GOGGLES

Veratti® M50™	18
Guard-Dog® G100™	18
Guard-Dog® Commander™ I	19
Guard-Dog® Flexor™ II	19
Guard-Dog® Evader™ I	19
Guard-Dog® Evader™ II	20
Encon® XPR36™w	20
Encon® Z100™ w/Quickdraw™	20
Encon® 160™	21
Encon® Encompass® 600™	21
Encon® 500™	21

SAFETY ACCESSORIES

Guard-Dog® Leashes	22
Veratti® Lens Cleaning Towelettes	22
Veratti® Fog Fixer®	22
Veratti® Fog Fixer® Dry Cloth	23

DISPLAY

Glasses Display Carousel	23
--------------------------	----

EMERGENCY EYEWASH SAFETY

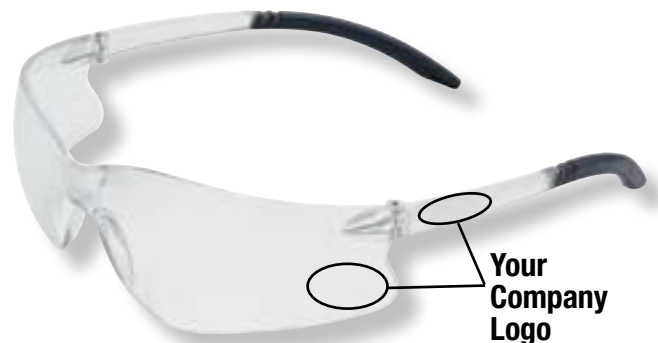
Portable Gravity Fed Eyewashes	24
--------------------------------	----

Custom Imprinting

- Have your logo or company name imprinted on safety eyewear
- Great for staff incentives and corporate promotions
- Single color imprints available



Look for this symbol throughout the catalog. It indicates that custom imprinting is available for that product.



**Call us for pricing and other details!
1-800-283-6266**

While the function remains the same, due to continuous product improvements, products may vary from the photographs in the catalog.

NASCAR 460™

Product Features

- Officially licensed by NASCAR®
- Rugged, lightweight full frame eyewear
- Full wrap-around protection
- Sturdy one piece frame and nose piece

Specifications

- 8 base curve lens
- High Impact polycarbonate lenses
- ScratchCoat® & ENFOG® coatings
- 99.9% UVA & UVB protection to 385Nm

Meets These Specifications

- ANSI Z87.1+
- CSA Z94.3-2007



14601012

Product #	Frame / Lens	Coating
14601012	gray / clear	ScratchCoat®
14601112	gray / gray	ScratchCoat®
14601212	gray / indoor-outdoor	ScratchCoat®
14601312	gray / amber	ScratchCoat®
14601412	gray / silver mirror	ScratchCoat®
14602012	gray / clear	ENFOG®
14602112	gray / gray	ENFOG®



14601112 14601212 14601312 14601412 14602012 14602112

NASCAR 427™

Product Features

- Officially licensed by NASCAR®
- Sleak, weightless, low profile design
- Wrap-around protection
- Flexible temple tips for comfortable fit

Specifications

- 10 base curve lens
- High Impact polycarbonate lenses
- ScratchCoat® coating
- 99.9% UVA & UVB protection to 385Nm
- UV400 on the indoor-outdoor lenses

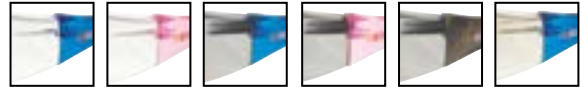
Meets These Specifications

- ANSI Z87.1+
- CSA Z94.3-2007
- CE EN166

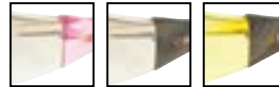


14271074

Product #	Frame / Lens	Coating
14271054	blue / clear	ScratchCoat®
14271094	pink / clear	ScratchCoat®
14271074	camo / clear	ScratchCoat®
14271154	blue / gray	ScratchCoat®
14271194	pink / gray	ScratchCoat®
14271174	cameo / gray	ScratchCoat®
14271254	blue / indoor-outdoor	ScratchCoat®
14271294	pink / indoor-outdoor	ScratchCoat®
14271274	camo / indoor-outdoor	ScratchCoat®
14271374	camo / amber	ScratchCoat®



14271054 14271094 14271154 14271194 14271174 14271254



14271294 14271274 14271374

NASCAR 442™

Product Features

- Officially licensed by NASCAR®
- Sleak, low profile design
- Padded nose piece and temple tips for a comfortable fit
- Wrap-around protection

Specifications

- 9.75 base curve lens
- High Impact polycarbonate lenses
- ENFOG® coating
- 99.9% UVA & UVB protection to 385Nm
- UV400 on the indoor-outdoor lenses

Meets These Specifications

- ANSI Z87.1+
- CSA Z94.3-2007
- CE EN166



14422004

Product #	Frame / Lens	Coating
14422004	clear - gray tip / clear	ENFOG®
14422094	clear - yellow tip / clear	ENFOG®
14422114	gray - orange tip / gray	ENFOG®
14422204	clear - orange tip / I-O mirror	ENFOG®
14422414	gray - gray tip / silver mirror	ENFOG®



14422094 14422114 14422204 14422414

PERSONAL PROTECTIVE EQUIPMENT

NASCAR GT™

Product Features

- Officially licensed by NASCAR®
- Weightless, low profile design
- Wrap-around protection
- Ultra flexible polycarbonate frame

Specifications

- 9.75 base curve lens
- High Impact polycarbonate lenses
- ScratchCoat® & ENFOG® coatings available
- 99.9% UVA & UVB protection to 385Nm

Meets These Specifications

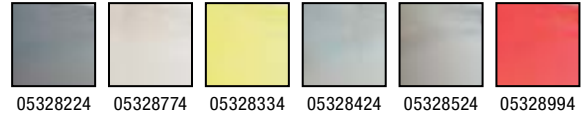
- ANSI Z87.1+
- CSA Z94.3-2007



Product #	Frame / Lens	Coating
05328004	clear / clear	ScratchCoat®
05329004	clear / clear	ENFOG®
05328224	gray / gray	ScratchCoat®
05329224	gray / gray	ENFOG®
05328774	clear / indoor-outdoor	ScratchCoat®
05328334	amber / amber	ScratchCoat®
05328424	gray / silver mirror	ScratchCoat®
05328524	gray / blue mirror	ScratchCoat®
05328994	vermilion / vermilion	ScratchCoat®



05328004



Veratti 514™

Product Features

- Temples adjust for broad head to a more narrow head shape
- Light wight, stylish wrap-around design for maximum protection
- Large padded nose piece

Product Specification

- Base 9.5 curve lens
- High Impact polycarbonate lenses
- ScratchCoat® & ENFOG® coatings available
- 99.9% UVA & UVB Protection to 385Nm
- UV400 on the indoor-outdoor lenses

Meets These Specifications

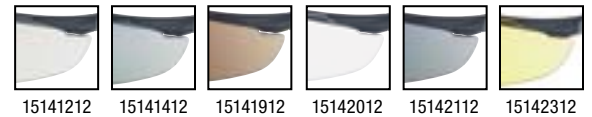
- ANSI Z87.1+
- CSA Z94.3-2007



Product #	Frame / Lens	Coating
15141012	black / clear	ScratchCoat®
15141212	black / indoor-outdoor	ScratchCoat®
15141412	black / silver mirror	ScratchCoat®
15141912	black / brown	ScratchCoat®
15142012	black / clear	ENFOG®
15142112	black / smoke	ENFOG®
15142312	black / amber	ENFOG®



15141012



Veratti 3UR™

Product Features

- Flexible and adjustable ratchet temples
- Lightweight one-piece wraparound lens
- Unobstructed field of vision
- Large padded nose piece

Product Specification

- Base 9 curve lens
- High Impact polycarbonate lenses
- ScratchCoat® & ENFOG® coatings available
- 99.9% UVA & UVB Protection to 385Nm

Meets These Specifications

- ANSI Z87.1+
- CSA Z94.3-2007



Product #	Frame / Lens	Coating
13UR1012	black / clear	ScratchCoat®
13UR1112	black / gray	ScratchCoat®
13UR1212	black / indoor-outdoor	ScratchCoat®
13UR1312	black / amber	ScratchCoat®
13UR2012	black / clear	ENFOG®
13UR2112	black / grey	ENFOG®
13UR2412	black / silver mirror	ENFOG®



13UR1012



Veratti LC7™

Product Features

- ERGO extended wear temples with ratchet adjustment function
- Soft, padded nose piece
- Wrap-around protection

Product Specification

- Base 9 curve lens
- High Impact polycarbonate lenses
- ScratchCoat® coating
- 99.9% UVA & UVB Protection to 385Nm

Meets These Specifications

- ANSI Z87.1+
- CSA Z94.3-2007



1LC71012

Product #	Frame / Lens	Coating
1LC71012	black / clear	ScratchCoat®
1LC71112	black / gray	ScratchCoat®
1LC71212	black / indoor-outdoor	ScratchCoat®
1LC71312	black / amber	ScratchCoat®
1LC72012	black / clear	ENFOG®
1LC72112	black / gray	ENFOG®



1LC71112 1LC71212 1LC71312 1LC72012 1LC72112



Veratti 283™

Product Features

- Stylish curved lens that provides maximum field vision and peripheral protection
- Adjustable padded nose piece
- Wrap around protection

Product Specification

- Base 9.5 curve lens
- High Impact polycarbonate lenses
- ScratchCoat® coating
- 99.9% UVA & UVB Protection to 385Nm

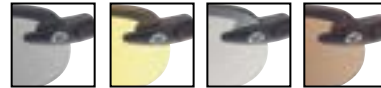
Meets These Specifications

- ANSI Z87.1+
- MCEPS GL-PD 10-12



12831014

Product #	Frame / Lens	Coating
12831014	black / clear	ScratchCoat®
12831114	black / smoke	ScratchCoat®
12831314	black / amber	ScratchCoat®
12831414	black / silver mirror	ScratchCoat®
12831894	black / brown	ScratchCoat®



12831114 12831314 12831414 12831894



Veratti 383™

Product Features

- Large padded nose piece
- Sleek, wraparound design
- Low profile light weight frame

Product Specification

- Base 9 curve lens
- High Impact polycarbonate lenses
- ScratchCoat® & ENFOG® coating available
- 99.9% UVA & UVB Protection to 385Nm

Meets These Specifications

- ANSI Z87.1+
- CSA Z94.3-2007



13832004

Product #	Frame / Lens	Coating
13832004	clear / clear	ENFOG®
13832114	gray / gray	ENFOG®
13831554	gray / blue mirror	ScratchCoat®
13832334	amber / amber	ENFOG®



13832114 13831554 13832334



PERSONAL PROTECTIVE EQUIPMENT

Veratti 410™

Product Features

- Large padded nose piece
- Weightless frame and polycarbonate lens gives all day comfort

Product Specification

- Base 8 curve lens
- High Impact polycarbonate lenses
- ScratchCoat® coating
- 99.9% UVA & UVB Protection to 385Nm

Meets These Specifications

- ANSI Z87.1+
- CSA Z94.3-2007



14101014



14101114 14101194 14101314

Product #	Frame / Lens	Coating
14101014	black and red / clear	ScratchCoat®
14101114	black and silver / gray	ScratchCoat®
14101194	black and slate / gray	ScratchCoat®
14101314	black and yellow / amber	ScratchCoat®



Veratti 528™

Product Features

- Stylish curved lens provides maximum field vision and peripheral protection
- Adjustable nose piece and padded temple tip for comfortable fit
- Wrap-around protection

Product Specifications

- 8 base curve lens
- High Impact polycarbonate lenses
- ScratchCoat® coating
- 99.9% UVA & UVB protection to 385Nm

Meets These Specifications

- ANSI Z87.1+
- CSA Z94.3-2007



15281024



15281084 15281094 15281114 15281414 15281574 15281884

Product #	Frame / Lens	Coating
15281024	crystal gray / clear	ScratchCoat®
15281084	crystal orange / clear	ScratchCoat®
15281094	crystal light gray / clear	ScratchCoat®
15281114	black / smoke	ScratchCoat®
15281414	pearl gray / silver mirror	ScratchCoat®
15281574	crystal blue / blue mirror	ScratchCoat®
15281884	crystal brown / brown	ScratchCoat®
15281994	crystal red / red mirror	ScratchCoat®



15281994



Veratti 351™

Product Features

- Sporty design provides excellent wrap-around coverage
- Built in brow guard and side shields for maximum protection
- Soft feathered nose piece provides a universal fit
- Five lens color options to choose from

Product Specifications

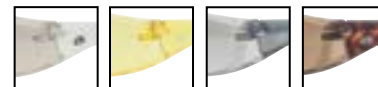
- 8 base curve lens
- High Impact polycarbonate lenses
- ScratchCoat® coating
- 99.9% UVA & UVB protection to 385Nm
- UV400 on the indoor-outdoor lenses

Meets These Specifications

- ANSI Z87.1+
- CSA Z94.3-2007
- CE EN166
- MCEPS GL-PD 10-12



13511004



13511204 13511334 13511414 13511884

Product #	Frame / Lens	Coating
13511004	clear / clear	ScratchCoat®
13511204	clear / indoor-outdoor	ScratchCoat®
13511334	amber / amber	ScratchCoat®
13511414	gray / silver mirror	ScratchCoat®
13511884	tortoise / brown	ScratchCoat®



Veratti 267™

Product Features

- Wrap around lenses with superior peripheral vision
- Built in brow guard with vents to allow maximum air flow
- Co-injected temple tips for a soft and comfortable fit
- Flexible and ventilated nose piece
- Ratchet angle and length adjustment temples provide customized fit

Product Specification

- 8 base curve lens
- High Impact polycarbonate lenses
- ENFOG® coating
- 99.9% UVA & UVB protection to 385Nm

Meets These Specifications

- ANSI Z87.1+
- CE EN166
- MCEPS GL-PD 10-12



Product #	Frame / Lens	Coating
12672014	gray / clear	ENFOG®
12672114	gray / gray	ENFOG®
12672214	gray / indoor-outdoor	ENFOG®
12672314	gray / amber	ENFOG®



12672014



Veratti 400™

Product Features

- Three position temple length adjustment for a customized fit
- Built in brow guard for maximum air flow
- Universal fit nose bridge
- Wide angular lenses for maximum coverage

Product Specification

- 7 base curve lens
- High Impact polycarbonate lenses
- ENFOG® coating
- 99.9% UVA & UVB protection to 385Nm

Meets These Specifications

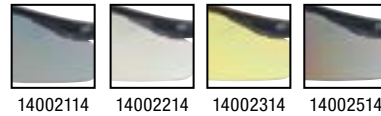
- ANSI Z87.1+
- CSA Z94.3-2007
- CE EN166
- MIL-PRF-31013



Product #	Frame / Lens	Coating
14002014	black / clear	ENFOG®
14002114	black / gray	ENFOG®
14002214	black / indoor-outdoor	ENFOG®
14002314	black / amber	ENFOG®
14002514	black / blue mirror	ENFOG®



14002014



Veratti V8™

Product Features

- Stylish curved lens provides maximum field vision and peripheral protection
- Co-injected temples and feathered nose piece provide a comfortable fit
- Flexible and ventilated nose piece

Product Specifications

- 8 base curve lens
- High Impact polycarbonate lenses
- ScratchCoat® coating
- 99.9% UVA & UVB protection to 385Nm
- UV400 on the indoor-outdoor lenses

Meets These Specifications

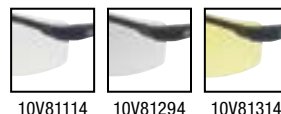
- ANSI Z87.1+
- CSA Z94.3-2007
- CE EN166
- MCEPS GL-PD 10-12



Product #	Frame / Lens	Coating
10V81114	black & gray / clear	ScratchCoat®
10V81294	black & gray / indoor-outdoor	ScratchCoat®
10V81314	black & yellow / amber	ScratchCoat®
10V81454	blue & gray / silver mirror	ScratchCoat®



10V81454



PERSONAL PROTECTIVE EQUIPMENT

Veratti 307™

Product Features

- Ultra stylish wrap-around frame with co-injected temples
- One piece semi-attached lens for a cooling flow of air to prevent fogging
- Soft adjustable nose piece for a universal fit

Specifications

- 9 base curve lens
- High Impact polycarbonate lenses
- ScratchCoat® coating
- 99.9% UVA & UVB protection to 385Nm

Meets These Specifications

- ANSI Z87.1+
- CSA Z94.3-2007



Product #	Frame / Lens	Coating
09206804	translucent blue / clear	ScratchCoat®
09206824	translucent blue / gray	ScratchCoat®
09206874	translucent blue / indoor-outdoor	ScratchCoat®



09206804

09206824

09206874

Veratti V6™

Product Features

- Single wrap-around lens with superior peripheral vision
- Sleek, linear temple design with excellent ventilation
- Soft nose piece and slim temple tips for secure and comfortable fit
- Includes a microfiber bag for cleaning and storage

Product Specification

- 8 base curve lens
- High Impact polycarbonate lenses
- ScratchCoat® coating
- 99.9% UVA & UVB protection to 385Nm
- UV400 on the indoor-outdoor lenses

Meets These Specifications

- ANSI Z87.1+
- CSA Z94.3-2007
- CE EN166



Product #	Frame / Lens	Coating
09209104	black / clear	ScratchCoat®
09209124	black / gray	ScratchCoat®
09209194	black / indoor-outdoor	ScratchCoat®
09209174	black / red mirror	ScratchCoat®



09209104



09209124 09209194 09209174

Veratti LS7™

Product Features

- Weightless, wrap-around design
- Defined browguard for top protection
- Ultra feminine frame colors
- Soft ventilated nose piece for secure fit

Product Specification

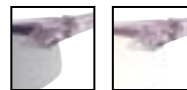
- 9.5 base curve lenses
- High Impact polycarbonate lenses
- ScratchCoat® coating
- 99.9% UVA & UVB protection to 385Nm
- UV400 on the indoor-outdoor lenses

Meets These Specifications

- ANSI Z87.1+
- CSA Z94.3-2007



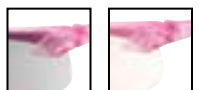
Product #	Frame / Lens	Coating
09205704	purple / clear	ScratchCoat®
09205804	pink / clear	ScratchCoat®
09205724	purple / gray	ScratchCoat®
09205824	pink / gray	ScratchCoat®
09205774	purple / indoor-outdoor	ScratchCoat®
09205874	pink / indoor-outdoor	ScratchCoat®



09205724 09205774



09205704



09205824 09205874

09205804

Veratti 429™

Product Features

- Compact, ultra lightweight frame for extended wear
- Universal gel nose bridge for total comfort
- Colorful co-injected rubberized temples
- Ratcheting temples to fit a wide range of facial features

Specifications

- 9.5 base curve lens
- High Impact polycarbonate lenses
- ScratchCoat® & ENFOG® coatings available
- 99.9% UVA & UVB protection to 385Nm
- UV400 on the indoor-outdoor lenses

Meets These Specifications

- ANSI Z87.1+
- CE EN166



Product #	Frame / Lens	Coating
08204804	black-blue / clear	ScratchCoat®
08204904	black-green / clear	ENFOG®
08204824	black-red / gray	ScratchCoat®
08204924	black-gray / gray	ENFOG®
08204874	black-orange / indoor-outdoor	ScratchCoat®
08204834	black-yellow / amber	ScratchCoat®



08204834



08204804 08204904 08204824 08204924 08204874

Veratti Sport™

Product Features

- Sleek style combined with comfort
- Frameless design
- Lightweight nylon frame
- Double-coated temple tips
- Telescopic adjustable temples

Specifications

- 6.75 base curve lens
- High Impact polycarbonate lenses
- ScratchCoat® & ENFOG® coatings available
- 99.9% UVA & UVB protection to 385Nm

Meets These Specifications

- ANSI Z87.1+
- CSA Z94.3-2007



Product #	Frame / Lens	Coating
05278014	black / clear	ScratchCoat®
05279014	black / clear	ENFOG®
05278214	black / gray	ScratchCoat®
05278714	black / indoor-outdoor	ScratchCoat®



05278014



05278214 05278714

Veratti GT™

Product Features

- Weightless, low profile design
- Frameless, translucent wrap-around comfort
- Comfortable to wear all day
- Ultra flexible frame structure
- Rubberized temple tips

Specifications

- 9.75 base curve lens
- High Impact polycarbonate lenses
- ScratchCoat® & ENFOG® coatings available
- 99.9% UVA & UVB protection to 385Nm
- UV400 on the indoor-outdoor lenses

Meets These Specifications

- ANSI Z87.1+
- CSA Z94.3-2007



Product #	Frame / Lens	Coating
04328004	clear / clear	ScratchCoat®
04329004	clear / clear	ENFOG®
04328224	gray / gray	ScratchCoat®
04329224	gray / gray	ENFOG®
04328774	clear / indoor-outdoor	ScratchCoat®
04328334	amber / amber	ScratchCoat®



04328004



04328224 04328774 04328334

PERSONAL PROTECTIVE EQUIPMENT

Veratti® 1000™

Product Features

- European style, wrap-around design
- One piece lightweight polycarbonate frame
- Three point adjustable temples

Specifications

- 10 base curve lens
- High Impact polycarbonate lens
- ScratchCoat® & ENFOG® coatings available
- 99.9% UVA & UVB protection to 385Nm

Meets These Specifications

- ANSI Z87.1+



Product #	Frame / Lens	Coating
05258014	black / clear	ScratchCoat®
05259014	black / clear	ENFOG®
05258034	silver / clear	ScratchCoat®
05258214	black / gray	ScratchCoat®
05259214	black / gray	ENFOG®
05258234	silver / gray	ScratchCoat®
05258314	black / amber	ScratchCoat®
05258414	black / silver mirror	ScratchCoat®
05258434	silver / silver mirror	ScratchCoat®
05258514	black / blue mirror	ScratchCoat®
05258534	silver / blue mirror	ScratchCoat®
05258432	black / light silver	ScratchCoat®
05258412	silver / light silver	ScratchCoat®
05258512	black / light blue	ScratchCoat®
05258532	silver / light blue	ScratchCoat®



05258014



Veratti® 2000™

Product Features

- Extreme safety, fashion and value
- Wrap-around comfort
- Sleek, weightless design
- Offers the most advanced optics

Specification

- 11 base curve lens
- High Impact polycarbonate lenses
- ScratchCoat® & ENFOG® coatings available
- 99.9% UVA & UVB protection to 385Nm

Meets These Specifications

- ANSI Z87.1+



Product #	Frame / Lens	Coating
05778004	clear / clear	ScratchCoat®
05779004	clear / clear	ENFOG®
05776004	clear / clear MINI	ENFOG®
05778224	gray / gray	ScratchCoat®
05779224	gray / gray	ENFOG®
05776224	gray / gray MINI	ENFOG®
05778774	clear / indoor-outdoor	ScratchCoat®
05778334	amber / amber	ScratchCoat®
05778424	gray / silver mirror	ScratchCoat®
05778524	gray / blue mirror	ScratchCoat®



05778004



Veratti® Breeze®

Product Features

- Classy, contemporary design
- Ultra lightweight nylon frame
- Defined side shields for maximum protection
- 4 point adjustable temples
- Unisex style
- Replaceable lenses available

Specifications

- 6 base curve lens
- High Impact polycarbonate lenses
- ScratchCoat® & ENFOG® coatings available
- 99.9% UVA & UVB protection to 385Nm

Meets These Specifications

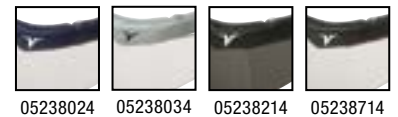
- ANSI Z87.1+
- CSA Z94.3-2007



Product #	Frame / Lens	Coating
05238014	black / clear	ScratchCoat®
05239014	black / clear	ENFOG®
05238024	blue / clear	ScratchCoat®
05238034	platinum / clear	ScratchCoat®
05238214	black / gray	ScratchCoat®
05239214	black / gray	ENFOG®
05238714	black / indoor-outdoor	ScratchCoat®



05238014



Veratti 1100™

Product Features

- All polycarbonate construction
- Full wrap-around coverage
- Lightweight low profile fit
- Economic solution

Specifications

- 10 base curve lens
- High Impact polycarbonate lenses
- ScratchCoat® coating available
- 99.9% UVA & UVB protection to 385Nm

Meets These Specifications

- ANSI Z87.1+



Product #	Frame / Lens	Coating
09251104	clear / clear	uncoated
09251124	gray / gray	uncoated
09251224	gray / gray	ScratchCoat®



09251104



09251124

Veratti OTG™

Product Features

- Comfortable over-the-glass safety eyewear
- Rubberized temples & nose piece provide secure fit
- Lightweight, durable frame
- Defined side shield, browguard and underside for maximum protection

Specifications

- Fits over frames up to 5¼" W and 1¾" H
- One piece polycarbonate
- 6 base curve lens
- High Impact polycarbonate lenses
- ScratchCoat® & ENFOG® coatings available
- 99.9% UVA & UVB protection to 385Nm

Meets These Specifications

- ANSI Z87.1+
- CSA Z94.3-2007



Product #	Frame / Lens	Coating
05178004	clear / clear	ScratchCoat®
05179004	clear / clear	ENFOG®
05178224	gray / gray	ScratchCoat®
05179224	gray / gray	ENFOG®



05178004



05178224

Veratti MINI OTG™

Product Features

- Designed for low profile prescription eyewear
- Lightweight, durable frame
- Defined side shield, browguard and underside for maximum protection

Specifications

- Fits over frames up to 5" W and 1" H
- One piece polycarbonate
- 2 base curve lens
- High Impact polycarbonate lenses
- ScratchCoat® & ENFOG® coatings available
- 99.9% UVA & UVB protection to 385Nm

Meets These Specifications

- ANSI Z87.1+
- CSA Z94.3-2007



Product #	Frame / Lens	Coating
12141004	clear / clear	ScratchCoat®
12142004	clear / clear	ENFOG®
12141104	gray / gray	ScratchCoat®
12142104	gray / gray	ENFOG®



12141004



12141104

PERSONAL PROTECTIVE EQUIPMENT

Veratti Tuff-Spec®

Product Features

- Classic visitor's spec design
- Polycarbonate side shields provide full side protection
- One piece polycarbonate wrap-around
- Universal nose bridge
- Available with dispenser

Specifications

- 4 base curve lens
- High Impact polycarbonate lenses
- ScratchCoat® & ENFOG® coatings available
- 99.9% UVA & UVB protection to 385Nm

Meets These

Specifications

- ANSI Z87.1+
- CSA Z94.3-2007



Product #	Frame / Lens	Coating	Dispenser
1400 Series			
05148002	clear / clear	uncoated	-
05148001	clear / clear	uncoated	Encon® box
05148003	clear / clear	uncoated	white box
05148202	gray / gray	uncoated	-
05148302	amber / amber	uncoated	-
05148102	green / green	uncoated	-
1900 Series			
05198002	clear / clear	ScratchCoat®	-
05199004	clear / clear	ENFOG®	-
05198034	blue / clear	ScratchCoat®	-
05198202	gray / gray	ScratchCoat®	-
1940 Series			
05191002	clear / clear	uncoated	-



05198002



05198034



05148302



05198202



05148102



05148001



05148003

Veratti GT™ Readers

Product Features

- Improves vision with close objects
- Weightless, low profile design
- Frameless, translucent wrap-around design
- Rubberized temple tips

Specifications

- Available in five different diopters: +1.0, +1.5, +2.0, +2.5, +3.0
- 9.75 base curve lens
- High Impact polycarbonate lenses
- ScratchCoat® coating
- 99.9% UVA & UVB protection to 385Nm

Meets These Specifications

- ANSI Z87.1+
- Complies with ANSI Z80.1-1999
- CSA Z94.3-2007



Product #	Frame / Lens	Diopter	Coating
04327001	clear / clear	+1.0	ScratchCoat®
04327002	clear / clear	+1.5	ScratchCoat®
04327003	clear / clear	+2.0	ScratchCoat®
04327004	clear / clear	+2.5	ScratchCoat®
04327005	clear / clear	+3.0	ScratchCoat®
04327011	gray / gray	+1.0	ScratchCoat®
04327012	gray / gray	+1.5	ScratchCoat®
04327013	gray / gray	+2.0	ScratchCoat®
04327014	gray / gray	+2.5	ScratchCoat®
04327015	gray / gray	+3.0	ScratchCoat®
04327021	clear / I/O	+1.0	ScratchCoat®
04327022	clear / I/O	+1.5	ScratchCoat®
04327023	clear / I/O	+2.0	ScratchCoat®
04327024	clear / I/O	+2.5	ScratchCoat®
04327025	clear / I/O	+3.0	ScratchCoat®



04327001

04327021

04327011

Veratti 2000™ Readers

Product Features

- See clearly, even with close objects
- Extreme safety, extreme fashion and extreme value
- Wrap-around comfort
- Sleek, weightless design
- Offers the most advanced optics in the industry

Specifications

- Available in five different diopters: +1.0, +1.5, +2.0, +2.5, +3.0
- 10 base curve lens
- High Impact polycarbonate lenses
- ScratchCoat® & ENFOG® coatings available
- 99.9% UVA & UVB protection to 385Nm

Meets These Specifications

- ANSI Z87.1+
- Complies with ANSI Z80.1-1999



Product #	Frame / Lens	Diopter	Coating
05777001	clear / clear	+1.0	ENFOG®
05777002	clear / clear	+1.5	ENFOG®
05777003	clear / clear	+2.0	ENFOG®
05777004	clear / clear	+2.5	ENFOG®
05777005	clear / clear	+3.0	ENFOG®
05777011	gray / gray	+1.0	ENFOG®
05777012	gray / gray	+1.5	ENFOG®
05777013	gray / gray	+2.0	ENFOG®
05777014	gray / gray	+2.5	ENFOG®
05777015	gray / gray	+3.0	ENFOG®
05777021	I/O / I/O	+1.0	ScratchCoat®
05777022	I/O / I/O	+1.5	ScratchCoat®
05777023	I/O / I/O	+2.0	ScratchCoat®
05777024	I/O / I/O	+2.5	ScratchCoat®
05777025	I/O / I/O	+3.0	ScratchCoat®



05777001

05777021

05777011

GUARD-DOGS® Original Bones™

Product Features

- Brow cushion for comfort
- Wrap around lens design with optical grade polycarbonate lens
- Provides 180 degrees of unobstructed vision
- Distortion free
- Ratcheting temples
- Rubber nose piece
- Replacement lenses available
- V.4 reader and Rx insert available

Specification

- 6.75 base curve lens
- Open cell filter foam
- High Impact polycarbonate lenses
- FogStopper™ coating
- 99.9% UVA & UVB protection to 385Nm

Meets These Specifications

- ANSI Z87.1+



PROTECTION LEVEL



Product #	Frame / Lens	Diopter	Coating
321-11-01	black / clear	-	FogStopper™
321-12-01	black / smoke	-	FogStopper™
321-13-01	black / golden	-	FogStopper™
321-73-01	black / IR 3.0 green	-	FogStopper™
321-11-00	clear lens replacement	-	FogStopper™
321-12-00	smoke lens replacement	-	FogStopper™
321-13-00	golden lens replacement	-	FogStopper™
321-73-00	IR 3.0 lens replacement	-	FogStopper™
713-00-90	clear v.4 Rx insert	-	-
714-115-04	clear v.4 insert	+1.5	FogStopper™
714-120-04	clear v.4 insert	+2.0	FogStopper™
714-125-04	clear v.4 insert	+2.5	FogStopper™



321-11-01



321-12-01 321-13-01 321-73-01

GUARD-DOGS® Vented Purebreds™

Product Features

- Patented elemental deflectors seals eye region from airborne particles
- Provides 180 degrees of unobstructed vision
- Distortion free
- Restraint leash included for added security
- Ratcheting temples
- Rubber nose piece
- Replacement lenses available
- V.4 reader and Rx insert available

Specification

- 6.75 base curve lens
- Open cell filter foam
- High Impact polycarbonate lenses
- FogStopper™ coating
- 99.9% UVA & UVB protection to 385Nm

Meets These Specifications

- ANSI Z87.1+



PROTECTION LEVEL



Product #	Frame / Lens	Diopter	Coating
331-11-01	black / clear	-	FogStopper™
331-12-01	black / smoke	-	FogStopper™
331-13-01	black / golden	-	FogStopper™
331-73-01	black / IR 3.0 green	-	FogStopper™
331-11-00	clear lens replacement	-	FogStopper™
331-12-00	smoke lens replacement	-	FogStopper™
331-13-00	golden lens replacement	-	FogStopper™
331-73-00	IR 3.0 lens replacement	-	FogStopper™
713-00-90	clear v.4 Rx insert	-	-
714-115-04	clear v.4 insert	+1.5	FogStopper™
714-120-04	clear v.4 insert	+2.0	FogStopper™
714-125-04	clear v.4 insert	+2.5	FogStopper™



331-11-01



331-12-01 331-13-01 331-73-01

GUARD-DOGS® Bones Xtreme™

Product Features

- Brow foam for added comfort
- Provides 180 degrees of unobstructed vision
- Distortion free
- Cushioned paddle temples
- Soft flexible nose piece
- Replacement lenses available
- V.4 reader and Rx insert available

Specification

- 7.25 base curve lens
- Fusion FR Foam
- High Impact polycarbonate lenses
- FogStopper™ coating
- 99.9% UVA & UVB protection to 385Nm

Meets These Specifications

- ANSI Z87.1+



PROTECTION LEVEL



Product #	Frame / Lens	Diopter	Coating
301-11-01	black / clear	-	FogStopper™
301-12-01	black / smoke	-	FogStopper™
301-11-00	clear lens replacement	-	FogStopper™
301-12-00	smoke lens replacement	-	FogStopper™
713-00-90	clear v.4 Rx insert	-	-
714-115-04	clear v.4 insert	+1.5	FogStopper™
714-120-04	clear v.4 insert	+2.0	FogStopper™
714-125-04	clear v.4 insert	+2.5	FogStopper™



301-11-01



301-12-01

PERSONAL PROTECTIVE EQUIPMENT

GUARD-DOGS® OFR™ Purebreds™

Product Features

- Flame resistant foam value HF-1/V-0
- Restraint leash included for added security
- Ratcheting temples
- Rubber nose piece
- Replacement lenses available
- V.4 reader and Rx insert available

Specifications

- 6.75 base curve lens
- High Impact polycarbonate lenses
- FogStopper™ coating
- 99.9% UVA & UVB protection to 385Nm
- OFR™ silicone foam

Meets These Specifications

- ANSI Z87.1+



PROTECTION LEVEL

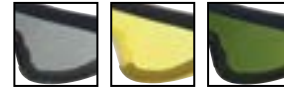


MAXIMUM
Heavy debris, high heat,
aggressive work environment.

Product #	Frame / Lens	Diopter	Coating
332-11-01	black / clear	-	FogStopper™
332-12-01	black / smoke	-	FogStopper™
332-13-01	black / golden	-	FogStopper™
332-73-01	black / IR 3.0 green	-	FogStopper™
332-11-00	clear lens replacement	-	FogStopper™
332-12-00	smoke lens replacement	-	FogStopper™
332-13-00	golden lens replacement	-	FogStopper™
332-73-00	IR 3.0 lens replacement	-	FogStopper™
713-00-90	clear v.4 Rx insert	-	-
714-115-04	clear v.4 insert	-	FogStopper™
714-120-04	clear v.4 insert	-	FogStopper™
714-125-04	clear v.4 insert	-	FogStopper™



332-11-01



332-12-01 332-13-01 332-73-01

GUARD-DOGS® Purebreds Xtreme™

Product Features

- Wrap around lens design with optical grade polycarbonate lens
- Provides 180 degrees of unobstructed vision
- Restraint leash included for added security
- Cushioned paddle temples
- Soft flexible nose piece
- Replacement lenses available
- V.4 reader and Rx insert available

Specification

- 7.25 base curve lens
- High Impact polycarbonate lenses
- FogStopper™ coating
- Fusion FR foam
- 99.9% UVA & UVB protection to 385Nm

Meets These Specifications

- ANSI Z87.1+



PROTECTION LEVEL



MODERATE
Medium to light debris,
light wind.

Product #	Frame / Lens	Diopter	Coating
311-11-01	black / clear	-	FogStopper™
311-12-01	black / smoke	-	FogStopper™
311-11-00	clear lens replacement	-	FogStopper™
311-12-00	smoke lens replacement	-	FogStopper™
713-00-90	clear v.4 Rx insert	-	-
714-115-04	clear v.4 insert	+1.5	FogStopper™
714-120-04	clear v.4 insert	+2.0	FogStopper™
714-125-04	clear v.4 insert	+2.5	FogStopper™



311-11-01



311-12-01

GUARD-DOGS® XJ2™

Product Features

- Adaptable to use with Rx lenses
- Restraint lease included for added security
- Telescoping temples
- Seals eye region from airborne particles with patented removable collar that can be removed or replaced
- Reader lenses available in +1.5, +2.0, and +2.5 diopter
- Replacement lenses available

Specifications

- 8 base curve lens
- High Impact polycarbonate lenses
- FogStopper™ coating
- Fusion FR foam
- 99.9% UVA & UVB protection to 385Nm

Meets These Specifications

- ANSI Z87.1+
- CE EN166



211-215-01



211-115-01

PROTECTION LEVEL



HEAVY
Heavy debris, wind & dust.

Product #	Frame / Lens	Diopter	Coating
211-11-01	black / clear	-	FogStopper™
211-11-00	clear lens replacement	-	FogStopper™
211-115-01	black / clear	+1.5	FogStopper™
211-120-01	black / clear	+2.0	FogStopper™
211-125-01	black / clear	+2.5	FogStopper™
211-12-01	black / smoke	-	FogStopper™
211-12-00	smoke lens replacement	-	FogStopper™
211-215-01	black / smoke	+1.5	FogStopper™
211-220-01	black / smoke	+2.0	FogStopper™
211-225-01	black / smoke	+2.5	FogStopper™



211-11-01



211-12-01

GUARD-DOGS® XJ4™

Product Features

- Seals eye region from airborne particles with patented removable collar that can be removed or replaced
- Dual lens frame with optical grade polycarbonate lenses
- Restraint lease included for added security
- 6 base curve Rx-able lens frames available
- Replacement lenses available

Specifications

- 8 base curve lens
- High Impact polycarbonate lenses
- FogStopper™ coating
- Fusion FR foam
- 99.9% UVA & UVB protection to 385Nm

Meets These Specifications

- ANSI Z87.1+



PROTECTION LEVEL



HEAVY

Heavy debris, wind & dust.

Product #	Frame / Lens	Coating
271-11-02	black onyx / clear	FogStopper™
273-11-02	black onyx / clear replacement lens	FogStopper™
271-11-07	gun metal / clear	FogStopper™
273-11-07	gun metal / clear replacement lens	FogStopper™
271-12-02	black onyx / smoke	FogStopper™
271-12-07	gun metal / smoke	FogStopper™
773-00-02	black onyx 6 base Rx lens frame	-
773-00-07	gun metal 6 base Rx lens frame	-



271-11-02



271-11-07

271-12-07

271-12-07

273-11-07

273-12-07

GUARD-DOGS® Dust Buster™ I

Product Features

- Dual lens frame that is adaptable for a wide range of Rx wearers
- Small frame and lens area
- Optical grade polycarbonate lenses
- Elemental deflectors seals eye region from airborne particles
- Distortion free
- Telescoping temples

Specifications

- 6 base curve lens
- High Impact polycarbonate lenses
- FogStopper™ coating
- 99.9% UVA & UVB protection to 385Nm

Meets These Specifications

- ANSI Z87.1+



PROTECTION LEVEL



MINIMAL

Peripheral work areas, light debris threat close proximity.

Product #	Frame / Lens	Coating
220-11-01	black / clear	FogStopper™
220-12-01	black / smoke	FogStopper™



220-11-01



220-12-01

GUARD-DOGS® Dust Buster™ II

Product Features

- Dual lens frame that is adaptable for a wide range of Rx wearers
- Medium frame and lens area
- 360 degree seal around eye area protects from airborne particles
- Optical grade polycarbonate lenses
- Distortion free
- Telescoping temples
- Restraint lease included for added security

Specifications

- 6 base curve lens
- High Impact polycarbonate lenses
- FogStopper™ coating
- 99.9% UVA & UVB protection to 385Nm

Meets These Specifications

- ANSI Z87.1+



PROTECTION LEVEL



MINIMAL

Peripheral work areas, light debris threat close proximity.

Product #	Frame / Lens	Coating
230-11-01	black / clear	FogStopper™
230-12-01	black / smoke	FogStopper™



230-11-01



230-12-01

PERSONAL PROTECTIVE EQUIPMENT

GUARD-DOGS® Dust Buster™ III

Product Features

- Dual lens frame that is adaptable for single vision Rx wearers
- Medium/Large frame and lens area
- Elemental deflectors seal eye region from airborne particles
- Optical grade polycarbonate lenses
- Distortion free
- Extended length temples with rubber grip strips

Specifications

- 8 base curve lens
- High Impact polycarbonate lenses
- FogStopper™ coating
- 99.9% UVA & UVB protection to 385Nm

Meets These Specifications

- ANSI Z87.1+



PROTECTION LEVEL



MINIMAL
Peripheral work areas, light debris threat close proximity.

Product #	Frame / Lens	Coating
240-11-01	black / clear	FogStopper™
240-12-01	black / smoke	FogStopper™



240-11-01



240-12-01

GUARD-DOGS® Reader Inserts

Product Features

- Snaps into Guard-Dogs® eyewear
- Fits all Original Bones, Bones Xtreme, PureBred Xtreme, Vented PureBreds and OFR PureBred styles
- Flat top bifocal reader
- Rx insert available without lenses for Rx customization

Meets These Specifications

- 6 base curve lens & frame
- FogStopper™ coating
- Available in three different diopters: +1.5, +2.0, +2.5



Product #	Frame / Lens	Coating
713-00-90	clear v.4 Rx insert / no lens	-
714-115-04	clear v.4 reader insert / clear +1.50	FogStopper™
714-120-04	clear v.4 reader insert / clear +2.00	FogStopper™
714-125-04	clear v.4 reader insert / clear +2.50	FogStopper™



714-115-04



713-00-90

Veratti® Tuff-Spec® Bonding

Product Features

- Classic visitor's spec design
- Polycarbonate side shields provide full side protection
- One piece polycarbonate wrap-around
- Universal nose bridge

Specifications

- 4 base curve lens
- High Impact polycarbonate lenses
- ENFOG® coating
- 99.9% UVA & UVB protection to 385Nm

Meets These Specifications

- ANSI Z87.1+ • CSA Z94.3-2007



Product #	Frame / Lens	Coating
05199402	Retina-SPEC™	ENFOG®



05199402

Veratti 2000™ Bonding

Product Features

- Extreme safety, fashion and value
- Wrap-around comfort
- Sleek, weightless design
- Offers the most advanced optics

Specification

- 11 base curve lens
- High Impact polycarbonate lenses
- ENFOG® coating
- 99.9% UVA & UVB protection to 385Nm

Meets These Specifications

- ANSI Z87.1+



05779664



Product #	Frame / Lens	Coating
05779664	Retina-SPEC™	ENFOG®

Veratti M50™

Product Features

- Wrap-around style provides excellent panoramic vision
- The compact, ultra lightweight design offers total comfort all day long
- The soft, flexible PVC frame and the rotating strap hugs the face for a secure seal
- Built in ventilation channel provides extra fog control and cooling
- Prescription insert available
- Available indirect vented or non-vented

Specifications

- 7 base curve lens
- High Impact polycarbonate lenses
- ENFOG® coating
- 99.9% UVA & UVB protection to 385 Nm

Meets These Specifications

- ANSI Z87.1+
- CSA Z94.3-2007



09602001



Product #	Frame / Lens	Coating	Vent	Strap
09602001	gray / clear	ENFOG®	indirect	neoprene
09602004	gray / clear	ENFOG®	indirect	elastic
09602005	gray / clear	ENFOG®	no vent	neoprene
09602002	gray / gray	ENFOG®	indirect	neoprene
09602003	gray / indoor-outdoor	ENFOG®	indirect	neoprene
09602000			prescription insert	
09602006			mylar goggle lens cover	



09602004 09602005 09602002 09602003 09602000 09602006

GUARD-DOGS® G100™

Product Features

- Eyewear and goggle all-in-one
- Replaceable lens combinations
- Interchangeable temples and goggle strap
- Comfort goggle band for extended wear

Specifications

- 8 base curve lens
- Fusion FR / filter foam
- FogStopper™ coating
- High Impact frame and polycarbonate lenses
- 99.9% UVA & UVB protection to 385Nm
- UV400 on the indoor-outdoor lenses

Meets These Specifications

- ANSI Z87.1+
- CSA Z94.3-2007
- CE EN166
- MCEPS GL-10-12



2G100KIT



2G102014

2G102214

2G102114

PROTECTION LEVEL

MINIMAL
Peripheral work areas, light debris threat close proximity.

Product #	Description	Coating
2G102014	G100 black frame / clear lens	FogStopper™
2G102114	G100 black frame / gray lens	FogStopper™
2G102214	G100 black frame / indoor-outdoor lens	FogStopper™
2G100KIT	G100 black frame / clear & gray lenses	FogStopper™



PERSONAL PROTECTIVE EQUIPMENT

GUARD-DOGS® Commander™ I

Product Features

- Spacious interior frame to accommodate a wide variety of eyeglass sizes
- Dual layer open cell/fusion foam for added depth
- Elemental deflectors keep out airborne debris
- Optical grade polycarbonate lenses
- Distortion free
- Adjustable woven strap
- Flexible vented frame

Specifications

- 6 base curve lens
- Fusion FR / filter foam
- High Impact polycarbonate lenses
- FogStopper™ coating
- 99.9% UVA & UVB protection to 385Nm

Meets These Specifications

- ANSI Z87.1+



PROTECTION LEVEL



Product #	Frame / Lens	Coating
250-11-01	black / clear	FogStopper™
250-12-01	black / smoke	FogStopper™



250-11-01



250-12-01

GUARD-DOGS® Flexor™ II

Product Features

- Wrap-around frame design provides unobstructed vision
- Dual lens frame with Fusion FR foam
- Adaptable to use with Rx lenses
- Elemental deflectors keep out airborne debris
- Optical grade polycarbonate lenses
- Distortion free
- Adjustable woven strap
- Folding frame for compact carrying
- Flexible vented frame

Specifications

- 6 base curve lens
- High Impact polycarbonate lenses
- FogStopper™ coating
- 99.9% UVA & UVB protection to 385Nm
- Fusion FR foam



Meets These Specifications

- ANSI Z87.1+

PROTECTION LEVEL



Product #	Frame / Lens	Coating
269-11-01	black / clear	FogStopper™
269-12-01	black / smoke	FogStopper™



269-11-01



269-12-01

GUARD-DOGS® Evader™ I

Product Features

- Spacious interior frame to accommodate a wide variety of eyeglass sizes
- Dual layer open cell / fusion foam for added depth
- Elemental deflectors keep out airborne debris
- Optical grade polycarbonate lenses
- Distortion free
- Adjustable woven strap
- Flexible vented frame

Specifications

- 8 base curve lens
- Fusion FR / filter foam
- High Impact polycarbonate lenses
- FogStopper™ coating
- 99.9% UVA & UVB protection to 385Nm

Meets These Specifications

- ANSI Z87.1+



PROTECTION LEVEL



Product #	Frame / Lens	Coating
254-11-01	black / clear	FogStopper™
254-12-01	black / smoke	FogStopper™



254-11-01



254-12-01

GUARD-DOGS® Evader™ II

Product Features

- Spacious interior frame to accommodate a wide variety of eyeglass sizes
- Dual layer open cell / fusion foam for added depth
- Elemental deflectors keep out airborne debris
- Optical grade polycarbonate lenses
- Distortion free
- Adjustable woven strap
- Flexible vented frame

Specifications

- 4 base curve lens
- Fusion FR / filter foam
- High Impact polycarbonate lenses
- FogStopper™ coating
- 99.9% UVA & UVB protection to 385Nm

Meets These Specifications

- ANSI Z87.1+



PROTECTION LEVEL



HEAVY

Heavy debris, wind & dust.

Product #	Frame / Lens	Coating
255-11-01	black / clear	FogStopper™
255-12-01	black / smoke	FogStopper™



255-11-01



255-12-01

Encon® XPR36™

Product Features

- Low profile, ergonomic design for extreme comfort and protection
- Positive seal against the face protects from liquid, chemical splash and dust
- 360 degrees of air circulation with indirect circuitous ventilation system
- Built in QD2® for quick strap adjustment
- Replaceable lens

Specifications

- 5 base curve lens
- High Impact polycarbonate lens
- Anti-scratch and anti-fog ENCOTE® coating
- 99.9% UVA & UVB protection to 385Nm

Meets These Specifications

- ANSI Z87.1+
- CSA Z94.3-2007



Product #	Frame / Lens	Coating	Strap
08139054	blue / clear	ENCOTE®	blk neoprene
08139000	clear replacement lens	ENCOTE®	-



08139054

Encon® Z100™ with Quickdraw®

Product Features

- Traditional shaped body
- Straight lens and soft nose piece
- Comfortable fit
- Excellent chemical splash and impact protection
- Built in QD3™ easy adjustment system
- Replacement lenses available

Specifications

- 0 base curve lens
- ENFOG® coating available
- 99.9% UVA & UVB protection to 385Nm

Meets These Specifications

- ANSI Z87.1+
- CSA Z94.3-2007



Product #	Frame / Lens	Coating	QD3®	Strap
06087104	green / clear	uncoated	yes	neoprene
06088104	green / clear	ENFOG®	yes	neoprene
06075000	repl lens / clear	uncoated	-	-
06076000	repl lens / clear	ENFOG®	-	-



06088104

PERSONAL PROTECTIVE EQUIPMENT

Encon® 160™

Product Features

- Stylish ergonomic body
- Spherical lens for exceptional optics
- Superior chemical splash protection
- Available with Quickdraw® easy adjustment
- Exceptional ventilation
- Replacement lenses available
- Oversized to fit over prescription glasses

Specifications

- 3 base curve lens
- ENFOG® coating available
- 99.9% UVA & UVB protection to 385Nm



Meets These Specifications

- ANSI Z87.1+
- CSA Z94.3-2007

Product #	Model	Frame / Lens	Coating	QD2®	Strap
05067004	2-70	clear / clear	uncoated	yes	blk neoprene
05067204	2-62	gray / clear	uncoated	no	blk neoprene
05068004	2-66	clear / clear	ENFOG®	yes	blk neoprene
05068009	2-67	clear / clear	ENFOG®	no	blk elastic
05068204	2-59	gray / clear	ENFOG®	no	blk neoprene
05068209	2-60	gray / clear	ENFOG®	no	blk elastic
05068202	2-58	gray / clear	ENFOG®	no	wht neoprene
05068104	2-51	green / clear	ENFOG®	no	blk neoprene
05068224	5-59	gray / gray	ENFOG®	no	blk neoprene
05065000		repl lens / clear	uncoated	-	-
05065200		repl lens / gray	uncoated	-	-
05066000		repl lens / clear	ENFOG®	-	-
05066200		repl lens / gray	ENFOG®	-	-



05067004



05067204 05068009 05068209 05068202 05068224 05068104

Encon® Encompass® 600™

Product Features

- Unique body design
- Spherical lens with exceptional optics
- Fits comfortably over any size prescription glasses
- Maximum chemical splash protection
- Patented indirect circuitous ventilation
- Replacement lenses available
- Fits over large prescription glasses

Specifications

- 4 base curve lens
- ENFOG® coating available
- 99.9% UVA & UVB protection to 385Nm

Meets These

Specifications

- ANSI Z87.1+ • CSA Z94.3-2007



Product #	Frame / Lens	Coating	Vent	Strap
06067204	gray / clear	uncoated	indirect	blk neoprene
06068004	clear / clear	ENFOG®	indirect	blk neoprene
06068204	gray / clear	ENFOG®	indirect	blk neoprene
06068224	gray / gray	ENFOG®	indirect	blk neoprene
06066000	repl lens / clear	ENFOG®	-	-



06068004

06067204

06068224

Encon® 500™

Product Features

- High tech, lightweight body design
- Distortion-free optics
- Superior chemical splash protection
- Impact resistant
- Available with QD2® easy adjustment
- Replacement lenses available
- Flexible fitting

Specifications

- 4 base curve lens
- ENFOG® coating available
- 99.9% UVA & UVB protection to 385Nm



Meets These Specifications

- ANSI Z87.1+
- CSA Z94.3-2007

Product #	Model	Frame / Lens	Coating	QD2®	Strap
05057202	501Q	gray / clear	uncoated	yes	blk neoprene
05057204	501R	gray / clear	uncoated	no	blk neoprene
05058104	507R	gray / clear	ENFOG®	no	blk neoprene
05058201	503Q	gray / clear	ENFOG®	yes	blk neoprene
05058202	503RC	gray / clear	ENFOG®	no	blk neoprene
05058204	503R	gray / clear	ENFOG®	no	blk neoprene
05058209	503E	gray / clear	ENFOG®	no	blk elastic
05058214	503QC	gray / clear	ENFOG®	yes	blk elastic
05055000		repl lens / clear	uncoated	-	-
05055200		repl lens / gray	uncoated	-	-
05067000		goggle retainer ring			



05057202



05057204 05058209 05058104 05058214 05058202

Veratti® GUARD-DOGS® Leashes

Product Features

- Veratti® or Guard-Dogs® brands available
- Tube style attachment
- Available in black

Product #	Style	Color	Cinch	Attachment
801-00-01	braided	black	square	tube
801-00-02	cotton	black	square	tube



801-00-01 801-00-02

Veratti® Lens Cleaning Towelettes

Product Features

- Cleans glass, plastic, polycarbonate lenses and electronic surfaces
- Safe and effective for all types of lens coatings
- Ideal for glasses, goggles, monitors and tablets
- Anti-bacterial against the following bacteria for up to 24 hours:
Staph – 99.9%
E-coli – 99.9%

Specifications

- Available in tube dispenser or dispenser box
- Dispenser box contains 100 pre-moistened individually wrapped towelettes
- Can be table or wall mounted

Product #	Description
1160LCW2	100 pre-moistened individually wrapped towelettes in a dispenser box



1160LCW2

Veratti® Fog Fixer®

Product Features

- Cleans glass, plastic and polycarbonate lenses
- Suitable for a variety of uses
- Cleans lenses while providing long lasting anti-fog protection
- Safe and effective for use on uncoated lenses including polycarbonate, mirror coating, acrylic and glass
- Anti-bacterial against the following bacteria for up to 24 hours:
Staph – 99.9%
E-Coli – 99.9%

Specifications

- Available in a convenient dispenser box
- Dispenser box contains 100 pre-moistened individually wrapped towelettes
- Can be table or wall mounted

Product #	Description
1160AFW2	100 pre-moistened individually wrapped towelettes in a dispenser box



1160AFW2

PERSONAL PROTECTIVE EQUIPMENT

Veratti® Fog Fixer® Dry Cloth

Product Features

- Cleans glass, plastic and polycarbonate lenses
- Suitable for a variety of uses
- Cleans lenses while providing superior anti-fog protection
- Can be used up to 60 applications
- Keeps lenses fog free for over 24 hours

Specifications

- Comes with carry case
- Packaged in display box with 18 pieces, which can be table or wall mounted



1160AFC6

Product #	Description
1160AFC6	18 dry cloths per counter display

Glasses Display Carousel

Product Features

- Rotating acrylic countertop display
- Holds up to 12 pair of eyewear or goggles
- Comes with lock and key to secure your eyewear
- Mirror for customers convenience



05737099

Product #	Description
05737099	Countertop display w/lock and mirror

AQUARION®

Cover

Yellow ABS for protection of fluid bags and internal cavity of the station; Side windows for visual inspection of the fluid bags without removal of the cover

Back Plate

Polycarbonate to support the eyewash station with filled cartridges; Mounting slots spaced to screw to wall studs between 12 and 20 inches apart, a solid bearing frame or by using a retaining strap through molded slots around a support behind the plate formed to fit a 4 to 8 inch wide beam

Tray & Nozzles

Retracting tray to protect the nozzles from the environment; Single pull down motion pierces seals in the hoses allowing the fluid to flow immediately from the attached nozzles; Collects spent fluid and directs it to an integral drain port for future disposal; Usage indicator tie breaks upon actuation showing that the unit has been used. Enclosed ABS plastic heads connect to retracting tray; non-injurious, dual stream of water at 0.4 gpm (1.5 lpm)

Base

Black ABS base slides onto the back plate positioned and held through four retaining hooks, fastened with supplied self threading bolts if desired; Base provides structure to the station and holds the nozzle tray in an upright, ready to use position

Fluid Bags

Self-evacuating flexible bags keep the flushing fluid fresh and clean for reliable performance and maintenance free service; Two hand slots allow for easy handling and mounting into the station by one person

Ship Weight

28 lbs (12.7 kg)
70 lbs (14.97 kg) fluid Bags

Transport Cart

Weight—66 lbs (29.94 kg) Height—60" (to top bar)
Height—38" (to handlebars)
Width—28½" (wheel to wheel)



Product #	Description
AQ100	Aquarion® Eyewash Station
AQ100H130	Heated Aquarion® Eyewash Station
AQ120	Aquarion® Fluid Bags
01110302	Transport Cart only
01110700	Transport Cart and Receptacle only



Product #	Description
01104050	Gravity Fed Eye Wash
01104055	Gravity Fed Eye Wash with Transport Cart / Waste Receptacle
01104070	Hazardous Area Heated Gravity Fed Eyewash
01104049	Retrofit Heater / Jacket Assembly
01110302	Transport Cart only
01110700	Transport Cart & Receptacle only
01110764	Hydrosep®, (4) 8oz. bottles

Gravity Fed Eyewash

Tank

High visibility yellow polyethylene; two carrying handles; operation and maintenance instructions on front graphics
EW fill—15 min., 14 gal.; Height—24"; Width—20"; Depth—9½"

Eyewash

Enclosed ABS plastic heads integral to hinged drain tray; non-injurious, dual stream of water at 0.4 gpm (1.5 lpm)

Fill Weight

138 lbs (62.6 kg), 15 min. fill
19 lbs (8.61 kg), empty

Receptacle

Weight—14 lbs (6.35 kg) Height—22½"
Width—21½"

Transport Cart

Weight—66 lbs (29.94 kg) Height—60" (to top bar)
Height—38" (to handlebars)
Width—28½" (wheel to wheel)

Heated Option

Insulation Jacket
Waterproof, highly visible PVC coated nylon Thinsulate®

Electrical Connection

9 foot S.O.W. 16 gauge,
3-wire cord without plug; explosion-proof connection assembly required if applicable;
Voltage—120 VAC; Hertz 60 cycles;
Phase—single;
Amps—3.5 maximum

Ship Weight

32 lbs (14.52 kg)







ENCON® Safety Products, Inc.

6825 W. Sam Houston Pkwy., N.

Houston, TX 77041

Tel: 800-283-6266

Fax: 713-466-1703



Find us on
Facebook

facebook.com/enconsafety



Follow us on
Twitter

[@enconsafety](https://twitter.com/enconsafety)

PPECAT0415

www.enconsafety.com