

IRWIN®

STRAIT-LINE®

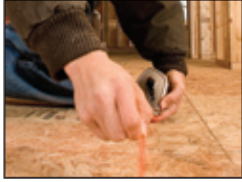
Marking & Layout Tools



www.irwin.com

IRWIN STRAIT-LINE Chalk Reels

IRWIN® STRAIT-LINE® has manufactured chalk reels that meet and exceed end-user needs for over 50 years. The complete line of chalk reels focuses on speed, line and durability and ranges from 1:1 gear ratio up to 6:1 gear ratio.



Aluminum Chalk Reel

- 1:1 gear ratio
- Locking metal handle minimizes tangles
- Durable aluminum alloy construction



SPEEDLINE™ Chalk Reel

- 3.5:1 gear ratio
- Locking metal handle minimizes tangles
- Polyester line delivers 5-6 strikes per pull



SPEEDLINE Pro Chalk Reel

- 3.5:1 gear ratio
- Twist-off cap for easy refills
- Nylon/polyester braided line for 2X durability*



MACH6™ Chalk Reel

- 6:1 gear ratio
- EZ access door for quick line change
- Nylon/polyester braided line for 2X durability*



Large Capacity Chalk Reel

- 2:1 gear ratio
- Nylon polyester line is 2X stronger and resists fraying and breaking*
- Durable steel crank locks securely to prevent line tangles



MARKING & LAYOUT

Chalk Reel Features

	<i>PRECISION</i>	<i>MACH6</i>	<i>SPEEDLINE Pro</i>	<i>SPEEDLINE</i>	Aluminum Chalk Reel	Large Capacity Chalk Reel
Gear Ratio	3.5:1	6:1	3.5:1	3.5:1	1:1	2:1
Polyester Line				X	X	
Nylon/Polyester Line	Braided Premium	2X Stronger *	2X Stronger *			2X Stronger *
Case Material	Aluminum	Aluminum	Plastic & Aluminum	Plastic	Aluminum	Plastic
Steel Handle	X	X	X	X	X	X
Hook	Wide Pronged	Wide Pronged	Wide Pronged	Narrow	Narrow	Bull Ring
Chalk Fill Cap	1/4 Turn	1/4 Turn	1/4 Turn			
Chalk Fill Side Door				Locking	Locking	Sliding
EZ Access Door	Tool-less	X				
Metal Drive Gear		X				

*as compared to traditional polyester line

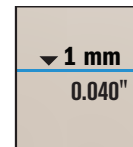
IRWIN STRAIT-LINE *PRECISION*

Chalk Reel

The IRWIN STRAIT-LINE PRECISION chalk reel is ideal for detail finish work. Designed with a smooth 3.5:1 gear system, this advanced chalk reel retrieves line up to 3.5 times faster than traditional models. Its metal plates and handle, plus premium thin line, provide extra strength for unrivaled durability. The tool-less EZ access door allows for easy entry into the back of the chalk reel to change or clean the line.

PRECISION CHALK REEL FEATURES

1. Nylon/polyester braided ILine delivers multiple snaps of 1 mm (0.040") thickness, available in 1 mm or 0.5 mm (0.020") thickness
2. 3.5:1 gear ratio rewinds 3X faster* for increased productivity
3. Aluminum housing for increased durability and greater impact resistance
4. Large steel handle for increased durability and strength



Length	Description	Item #	Bulk Item #	Pack Qty
Reels				
50'	Aluminum Chalk Reel - Carded (1:1)	63950	—	6
100'	Aluminum Chalk Reel - Carded (1:1)	64110	64111	6/24
100'	SPEEDLINE Chalk Reel - Carded (3.5:1)	64310	64311	6/24
100'	SPEEDLINE Pro Chalk Reel - Carded (3.5:1)	2031318DS	—	6
100'	MACH6 Chalk Reel - Carded (6:1)	2031314DS	—	6
100'	PRECISION Chalk Reel	2031322	—	6
150'	Large Capacity Chalk Reel (2:1)	2031311	—	2
Combos				
100'	Aluminum Reel & 4 oz. Standard Blue Chalk (1:1)	64499	—	3
100'	Aluminum Reel & 4 oz. Hi-Visibility Orange Chalk (1:1)	64497	—	3
100'	Aluminum Reel & 4 oz. Permanent Red Chalk (1:1)	64498	—	3
100'	SPEEDLINE Chalk Reel & 4 oz. Standard Blue Chalk (3.5:1)	64494	—	3
100'	SPEEDLINE Chalk Reel & 4 oz. Permanent Red Chalk (3.5:1)	64495	—	3
100'	SPEEDLINE Pro Chalk Reel & 4 oz. Standard Blue Chalk (3.5:1)	2031319DS	—	8
100'	SPEEDLINE Pro Chalk Reel & 4 oz. Permanent Red Chalk (3.5:1)	2031320DS	—	8
100'	MACH6 Chalk Reel & 4 oz. Standard Blue Chalk (6:1)	2031315DS	—	8
100'	MACH6 Chalk Reel & 4 oz. Permanent Red Chalk (6:1)	2031316DS	—	8
Replacement Lines				
50'	Replacement Line - Polyester	64550	—	6
100'	Replacement Line - Polyester	64610	—	6
100'	SPEEDLINE Pro and MACH6 Replacement Line - Nylon/Polyester	2031333	—	6
100'	Premium Thin Chalk Reel Replacement Line - 1.0 mm Thickness	2031323	—	6
100'	Premium Ultra Thin Chalk Reel Replacement Line - 0.5 mm Thickness	2031324	—	6
150'	Replacement Line - Lrg. Cap. Chalk Reel (2031311) - Nylon/Polyester	2031313	—	1

*as compared to traditional chalk reels

Chalk Reels



STRAIT-LINE Marking Chalk

Keep the Chalk Where You Want It

IRWIN® STRAIT-LINE® marking chalks have a newly engineered flip-top cap that keeps the chalk in the bottle where you want it and stops it from spilling out in areas that you don't. The flip-top cap, available on all IRWIN STRAIT-LINE chalk bottles, seals the chalk in an airtight chamber, keeping out moisture and reducing the risk of clumping.

The Right Chalk for Every Job

The IRWIN STRAIT-LINE range of category-leading marking products include dust-off chalk and permanent staining chalk. Dust-off chalk is temporary chalk that can be used to mark interior walls and trim and then be wiped away cleanly. Permanent staining chalk is great for extreme outdoor conditions because it can withstand harsh weather conditions and months of jobsite wear.

In addition to dust-off and permanent staining, the range of chalk has varying levels of permanence, color and special uses. So whether working indoors or outdoors, on finished surfaces or in extreme conditions, IRWIN STRAIT-LINE has the ideal chalk for every job.

MARKING & LAYOUT



Description	Item #	Shelf Pack
Dust-Off Marking Chalk		
6 oz. - Light Violet - Dust-Off	4935426	6
Standard Marking Chalk		
4 oz. - Blue Chalk - Standard	64801	6
8 oz. - White Chalk - Standard	64904	6
8 oz. - Blue Chalk - Standard	64901	6
2.5 lb. - Blue Chalk - Standard	65201	6
5 lb. - White Chalk - Standard	65104	4
5 lb. - Blue Chalk - Standard	65101	4
Hi-Visibility Marking Chalk		
8 oz. - Yellow Chalk - Hi-Vis	64903	6
8 oz. - Orange Chalk - Hi-Vis	64905	6
8 oz. - Green Chalk - Hi-Vis	64907	6
2.5 lb. - Orange Chalk - Hi-Vis	65205	6
5 lb. - Yellow Chalk - Hi-Vis	65103	4
5 lb. - Orange Chalk - Hi-Vis	65105	4
5 lb. - Green Chalk - Hi-Vis	65106	4
Permanent Marking Chalk		
4 oz. - Red Chalk - Permanent	64802	6
8 oz. - Red Chalk - Permanent	64902	6
8 oz. - Black Chalk - Permanent	64908	6
2.5 lb. - Red Chalk - Permanent	65202	6
2.5 lb. - Black Chalk - Permanent	65207	6
5 lb. - Red Chalk - Permanent	65102	4
5 lb. - Black Chalk - Permanent	2032160	4
Permanent Staining Marking Chalk		
6 oz. - Indigo Blue - Permanent Staining	4935518	6
6 oz. - Crimson Red - Permanent Staining	4935519	6
6 oz. - Midnight Black - Permanent Staining	4935520	6
2 lb. - Crimson Red - Permanent Staining	4935522	6
4 lb. - Indigo Blue - Permanent Staining	4935524	4
4 lb. - Crimson Red - Permanent Staining	4935525	4
4 lb. - Midnight Black - Permanent Staining	4935526	4

Marking Chalk Color Permanence & Application Guide

PERMANENCY SCALE				
Low				High
DUST-OFF 0 1 2 3 4	STANDARD 1 2 3 4	HI-VISIBILITY 2 3 4	PERMANENT 3 4	EXTREME CONDITIONS 4
INDOOR/ OUTDOOR • Eliminates the need for priming before painting • Ideal for composite decking COLORS 	INDOOR/ OUTDOOR • Temporary marking chalk COLORS 	OUTDOOR • Low light conditions COLORS 	WEEKS OUTDOORS • Weather-resistant lines remain visible after weeks of weather and jobsite wear and tear COLORS 	MONTHS OUTDOORS • Withstands months of weather and jobsite wear and tear COLORS

STRAIT-LINE Lumber Crayons



66401

- For use on oily, slick, wet, cold or dry surfaces
- Ideal for lumber, concrete, ceramics, rubber, metal, paper and cardboard
- Non-toxic and waterproof

SHARPIE® China Markers



2089

- Ideal for writing on china, glass, metal or plastic
- Marks on porous and non-porous surfaces
- Fade and moisture-resistant
- Write length of 2500 ft.

STRAIT-LINE Carpenter Pencils & Sharpener



66300

- 7" overall length pencil



233250

STRAIT-LINE Chalk Markers & Soapstone



2033500

- For temporary marking on metal surfaces
- Made of natural soapstone for superior marking

Hexagon Plumb Bobs



13085

- Accurately machined steel, corrosion-resistant nickel plating

Description	Color	Qty.	Carded Item #	Bulk Item #
4-1/2" Wax Based Lumber Crayon	Red	12-pc.	—	66401
	Blue	12-pc.	—	66402
	Green	12-pc.	—	66403
	Black	12-pc.	—	66404
	White	12-pc.	—	66405
	Yellow	12-pc.	—	66406
4-1/2" Wax Based Lumber Crayon	Red	2-pc.	666012	—
	Black	2-pc.	666042	—
	Yellow	2-pc.	666062	—
4-1/2" Wax Based Lumber Crayon	Red	6-pc.	66501	—
	Yellow	6-pc.	66506	—
Lumber Crayon Holder	—	—	66510	—

Description	Color	Qty.	Bulk Item #
China Marker	Red	12-pc.	2059
	Black	12-pc.	2089
	White	12-pc.	2060

Description	Qty.	Carded Item #	Bulk Item #
Soft Lead Carpenter Pencil	12-pc.	—	66301
Medium Lead Carpenter Pencil	72-pc.	—	66305SL
Medium Lead Carpenter Pencil	12-pc.	—	66300
Medium Lead Carpenter Pencil	6-pc.	66400	—
Hard Lead Carpenter Pencil	12-pc.	—	66302
Carpenter Pencil Sharpener	25-pc.	—	233250

Description	Color	Qty.	Bulk Item #
Soapstone 5" x 1/2" x 3/16"	White	144	2033500
Railroad Chalk	White	144	2032150
Half Moon Carpenter Chalk	Blue	144	2032101

Description	Weight	Qty.	Carded Item #
Hex Plumb Bob	5 oz.	5	13055
Hex Plumb Bob	8 oz.	5	13085
Plumb Bob	12 oz.	5	13125

STRAIT-LINE® Flagging Tapes



65901



66200

- Flagging tape is weatherproof PVC for harsh outdoor conditions
- Barrier tape is co-extruded polyethylene for durability and weather-resistance
- Ideal for construction, landscaping, excavating, identification of trees or hazards and locating underground cables or pipe

MARKING & LAYOUT

STRAIT-LINE Stake Flags



- Bright, fade-resistant color for maximum visibility
- Ideal for above-ground marking, even at -40°

STRAIT-LINE #18 Braided Twine



Length	Description	Qty.	Bulk Item #
Flagging Tape			
150'	Glo Red	24	65601
	Glo Orange	24	65602
	Glo Pink	24	65603
	Glo Lime	24	65604
	Glo Yellow	24	65605
300'	Red	24	65901
	Orange	24	65902
	Blue	24	65903
	White	24	65904
	Yellow	24	65905
Barrier Tape			
300' x 3"	CAUTION	8	66200
300' x 3"	DANGER - DO NOT ENTER	8	66202
300' x 3"	WET PAINT	8	66222
1000' x 3"	CAUTION - CONSTRUCTION AREA	8	66211
1000' x 3"	CAUTION	8	66231
Danger Flags Roll			
12" x 12"	Red Danger Flags	1	2034208
Floor Tape			
2" x 54'	Yellow/Black Floor Tape	12	2034300

Length	Color	Qty.	Bulk Item #
2.5" X 3.5" X 21"	Glo Orange	10x100 pc.	64100
	Glo Pink	10x100 pc.	64101
	Glo Lime	10x100 pc.	64102
	White	10x100 pc.	2034204
	Yellow	10x100 pc.	2034205
	Blue	10x100 pc.	2034206
	Glo Red	10x100 pc.	2034207

Length	Description	Qty.	Bulk Item #
100'	Orange # 18 Braided Twine	12	2034410
	Fluorescent Green # 18 Braided Twine	12	2034411
270'	Orange # 18 Braided Twine	12	2034403
	Fluorescent Green # 18 Braided Twine	12	2034408
500'	Orange # 18 Braided Twine	12	2034404
	Fluorescent Green # 18 Braided Twine	12	2034409